

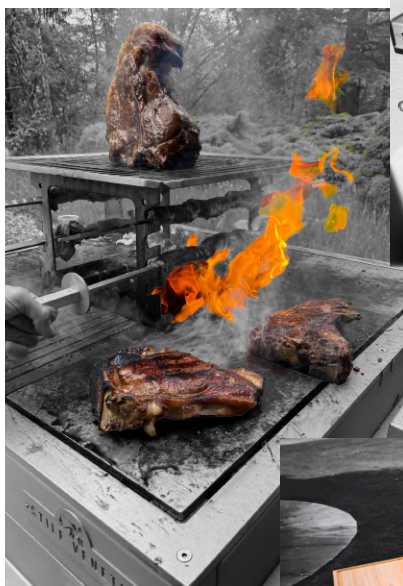


STILE VENETO



BQ Innovative
Experience

& Colored Modular



Imagine an *evolutionary barbecue*, one that transforms to suit your needs. Its solid, square base houses a central fire, ensuring intense and even cooking. On the sides, cooking plates are designed for grilling meat, fish, and vegetables with maximum control, enhancing the flavors through the magic of open flame.

The true innovation lies in its modularity: starting from the essential central core, you can add, piece by piece, work surfaces, cooking accessories, and even an integrated table, turning it into the perfect social hub. Let your imagination run free by choosing a color that makes it unique, standing out from any other BBQ on the market.

Designed to harmonize with any setting, the *Stile Veneto* barbecue blends refined design and durable materials, ensuring elegance and long-lasting performance. Thanks to its versatility, it adapts to every occasion: from a cozy family cookout to a large culinary event, offering configurations for every situation.

STILE VENETO is a new way of experiencing outdoor cooking.



& Luxury
Hardy





& Style
Design

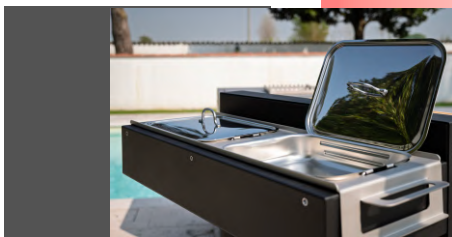
& Accessories Optional

To make your grilling experience even more convenient and functional, we offer a range of accessories designed to fit perfectly with your modular system.



Cutting Board Shelf:

Ideal for preparing and slicing food on a beechwood surface, making meal prep more convenient.



Serving Shelf:

A convenient pull-out tray with food containers, easy to transport and place on the table.



Cooler Shelf:

Perfect for keeping ingredients or drinks fresh during your barbecue. It keeps everything you need within easy reach.



Tool Shelf:

A must-have for keeping spatulas, tongs, and other utensils organized and within easy reach.



Trolley and Log Holder:

A wheeled trolley that integrates with the BBQ's modular shelves, and can also be used as a work surface. The log holder is equally practical—suitable for placement inside the barbecue or for external use.

Food-Grade Stainless Steel Cooking Plates:

- Flat plate for even cooking
- Perforated plate to allow excess fat to drain
- Ribbed plate for classic grill marks and enhanced flavor
- Wok plate designed for cooking with a wok



Plate Holder and Swapper:

The fastest and safest way to replace cooking plates—even while grilling.



Central Stand and Spit Forks:

Ideal for cooking and draining fatty meats, and an essential accessory for the spit roast.



Foldable Lid:

Ideal for covering and protecting the BBQ from the elements.
Optional side support for added convenience.



Dimensions and Materials:

Central body: 97 x 97 cm, H 100 cm
Cooking plates: 29 x 29 cm, H 1 cm, made of stainless steel
Firebox and ash pan: Stainless steel
Shelves: 89 x 35 cm, made of painted steel
External parts: Painted steel
Available with feet or on wheels

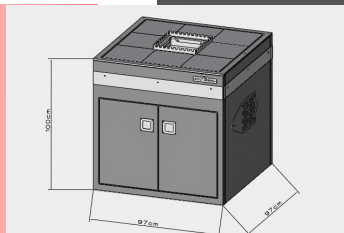


Table:

Can be used as a work surface or a social dining table. It can be attached to any of the four sides, just like any other shelf.





STILE VENETO

BBQ Innovative
Experience

Stile Veneto is a
registered trademark
owned by
TREZETA S.r.l.s.
Via Roma 85
31023 RESANA (TV)
ITALY